



Dif-Vent

Air diffuser terminal with fan prepared to house high efficiency HEPA and ULPA absolute filter with 99.95% efficiency.

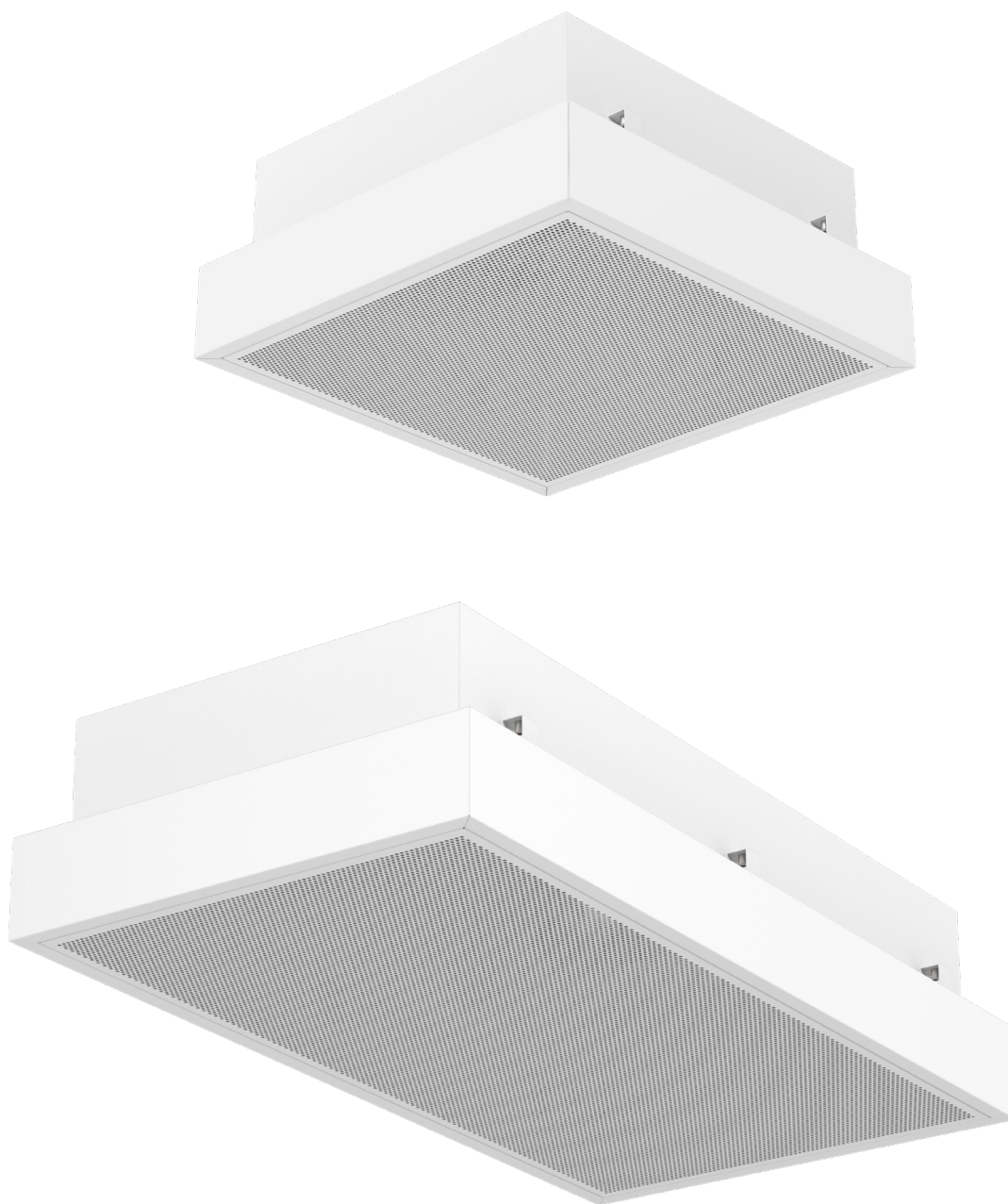
Technical features

Ventilation unit prepared to house absolute filters type minipleat with high efficiency from 99.95% to 99.9995%, corresponding to HEPA H13, H14 and ULPA U15 according to EN1822 standard. Optional: G4 efficiency prefiltration module according to EN779 standard.

Perforated diffuser for laminar flow and RAL 9016 white painted steel surround. Other finishes such as AISI304 stainless steel are available on request.

Backward blade fan with high efficiency and very low consumption external rotor EC motor, electronically adjustable 0-100% via 0-10V.

Suitable for suspended installation or adaptable to false ceilings in the "T" system.

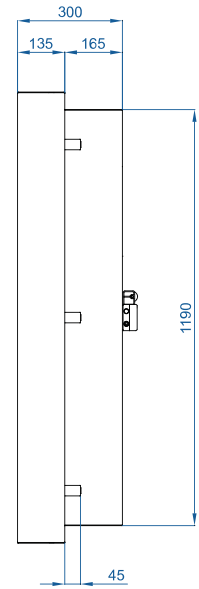
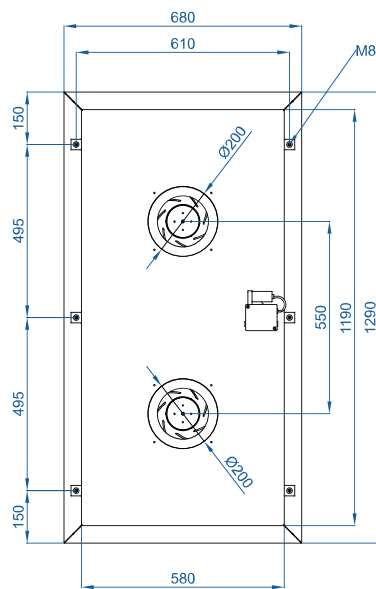
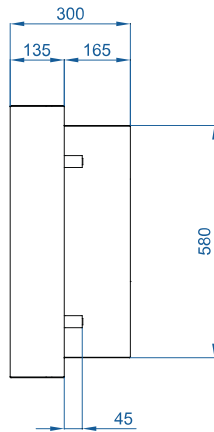
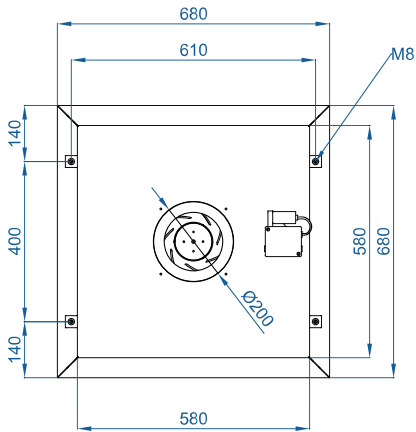
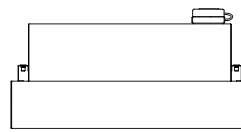
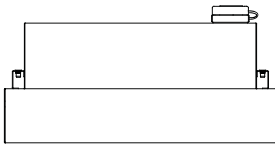




Unit	Airflow (m3/h)	Fans power (230V)(W)	Fans current (230V)(A)	Weight (Kg)	Noise level (a 5m)(dBA)
DIF-VENT 6/6 EC	600	155	1,1	23	51
DIF-VENT 6/12 EC	1200	310	2,2	41	53

Dimensions

Available in two sizes.



DIF-VENT 6/6

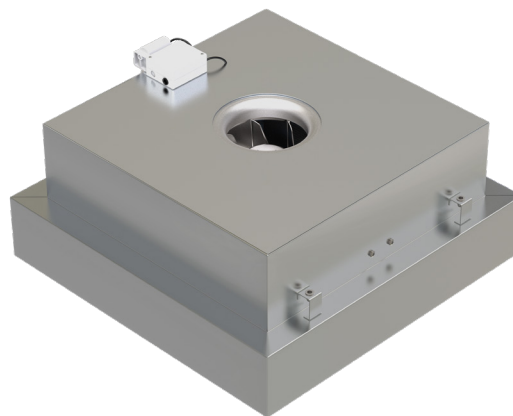
DIF-VENT 6/12

Finishings

The unit is available in two finishes: galvanised steel painted in RAL 9016 or stainless steel AISI304.

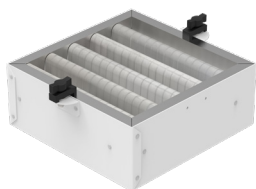


Standard RAL 9016

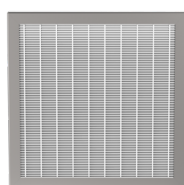


Stainless steel

Accessories



G4 prefilter



Absolute filter H13, H14 or U15



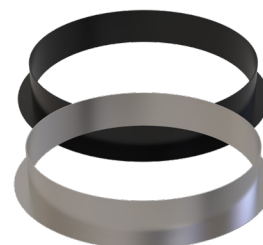
Potentiometer 0-10V



Differential pressure switch



Differential pressure transmitter



IL 200