

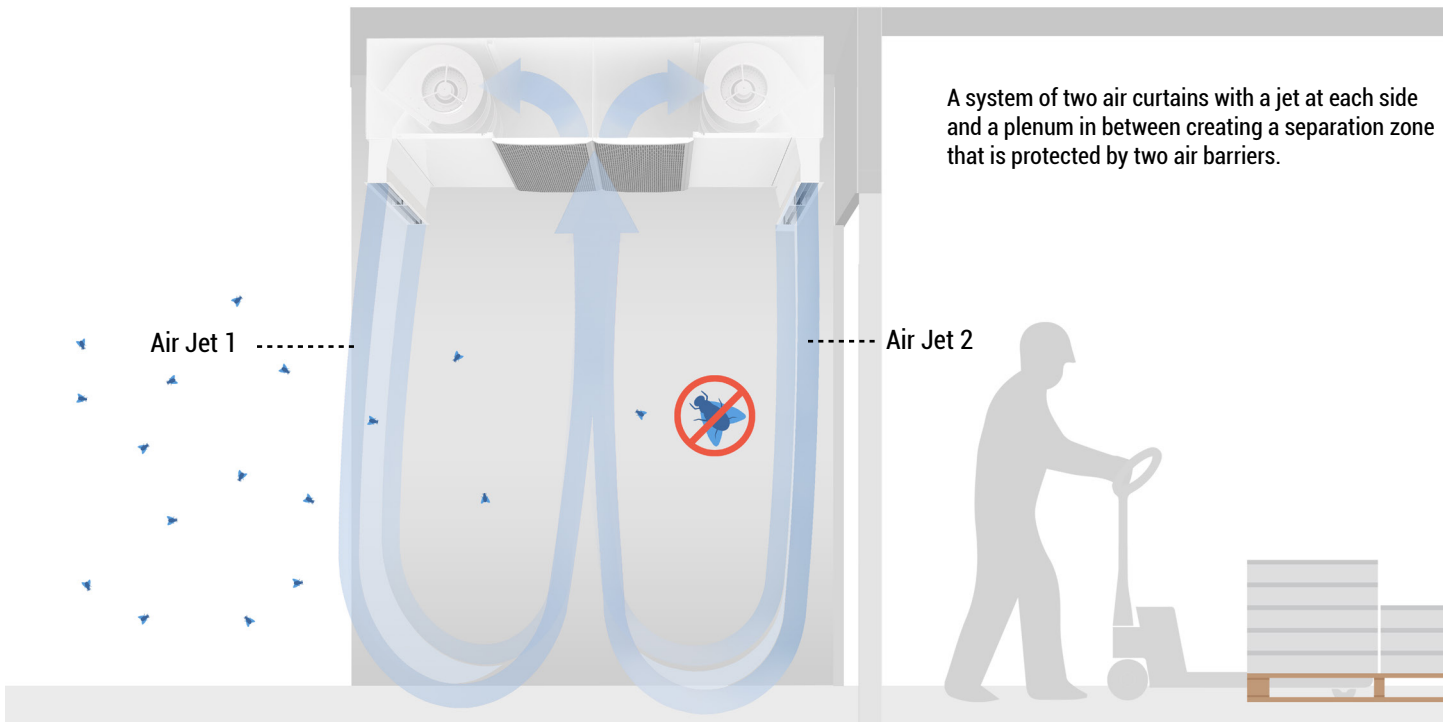
# FLY DUO SYSTEM



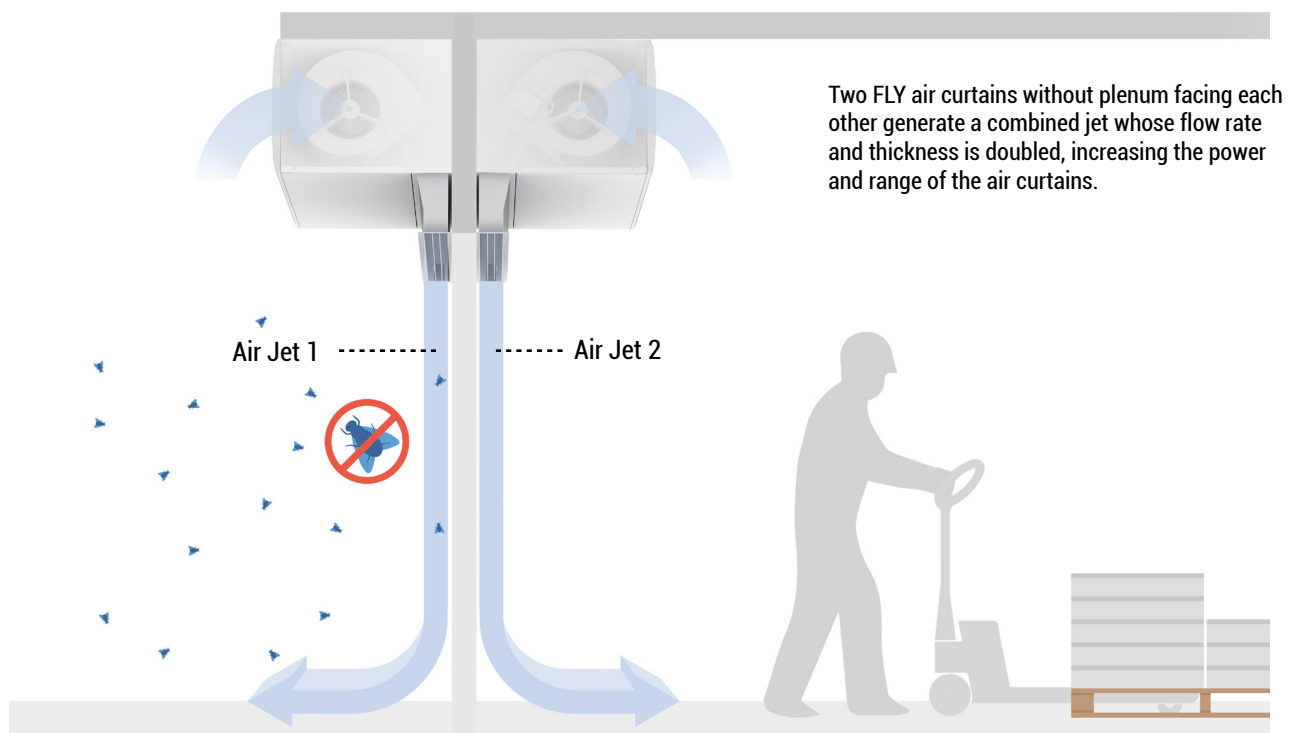
FLY DUO System consists of double protection barrier with two air jets that increases the insect control effect in the most critical installations. This double jet system works as a closed circuit creating a separation zone at the door entrance.

The first air jet fights directly against external insects infiltration. The air jet direction can be adjusted towards outside depending on the conditions of each installation. The second jet collects the possible insects infiltrations, guiding them to the central inlet plenum in order to drive them out.

## Fly Duo System with plenum

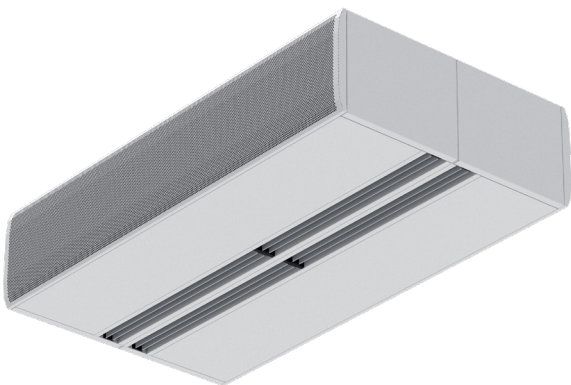


## Fly Duo System without plenum





WITHOUT PLENUM



WITH PLENUM



RAL 9016  
standard

Stainless  
steel

Other colors  
on request

Technical Features



Range  
Up to 3 m



Airflow / Length  
7800 - 20800 m³/h  
1 m to 3 m



Fans  
Centrifugal  
5-speed



Heating type  
Unheated



Heating capacity  
-



Control  
Plug&Play Hand Auto  
(Optional Clever Control)



Casing [\*]  
Galvanised steel



Inlet grille  
Circular perforated



Outlet lamellas  
Aluminium, airfoil type  
Adjustable 0-15° each side

Specially designed to be installed in places with higher insect and pest control requirements with maximum screening capacity.  
System composed by two air curtains to increase the efficiency against insects with very low consumption fans.  
Two available configurations depending on installation conditions "Without Plenum" or "With Plenum". Side walls to cover from the door to the jets should be provided by others.

"A" type without heating, air only. On option, for climate separation, the inside air curtain can be "P" type with water heated coil or "E" type with electrical shielded elements, three stages with integrated regulation.

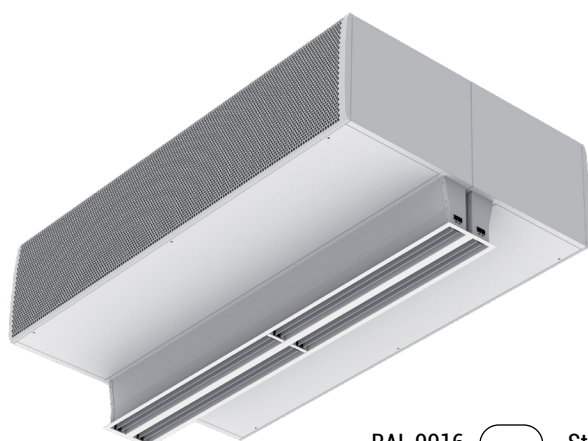
[\*] Customizable dimensions on request

UNHEATED

Model	Airflow m³/h	Ventilation power 230V~50/60Hz kW	Ventilation current 230V~50/60Hz A	Noise Level (5 m) dB(A)	Weight kg
FLY DUO KBB 1000 A	7.800	1,842	8,16	70	-
FLY DUO KBB 1500 A	10.400	2,456	10,88	70,5	-
FLY DUO KBB 2000 A	15.600	3,684	16,32	71	-
FLY DUO KBB 2500 A	18.200	4,298	19,04	71,5	-
FLY DUO KBB 3000 A	20.800	4,912	21,76	72	-



## WITHOUT PLENUM



## WITH PLENUM



RAL 9016  
standard



Stainless  
steel



Other colors  
on request



## Technical Features



Range  
Up to 3 m



Airflow / Length  
**8000 - 31800 m³/h**  
1 m to 3 m



Fans  
**Centrifugal**  
**5-speed**



Heating type  
**Unheated**



Heating capacity  
-



Control  
**Plug&Play Hand Auto**  
**(Optional Clever Control)**



Casing [\*]  
**Galvanised steel**



Inlet grille  
**Circular perforated**



Outlet lamellas  
**Aluminium, airfoil type**  
**Adjustable 0-15° each side**

Specially designed to be installed in places with higher insect and pest control requirements with maximum screening capacity.

System composed by two air curtains to increase the efficiency against insects with very low consumption fans. Two available configurations depending on installation conditions "Without Plenum" or "With Plenum". Side walls to cover from the door to the jets should be provided by others.

"A" type without heating, air only. On option, for climate separation, the inside air curtain can be "P" type with water heated coil or "E" type with electrical shielded elements, three stages with integrated regulation.

[\*] Customizable dimensions on request

### \* UNHEATED

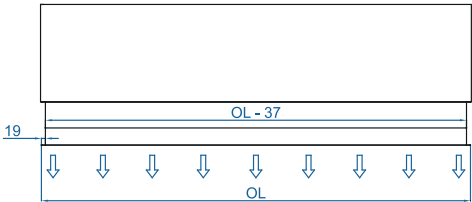
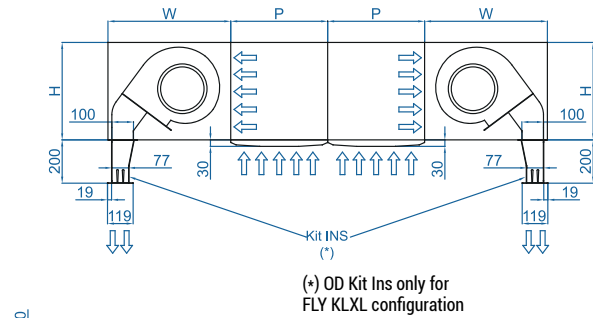
Model	Airflow m³/h	Ventilation power		Ventilation current		Noise Level (5 m) dB(A)	Weight kg
		230V~50Hz kW	230V~60Hz kW	230V~50Hz A	230V~60Hz A		
FLY DUO KL 1000 A	8.000	2,08	2,74	8,8	12,30	66	-
FLY DUO KL 1500 A	12.000	3,12	4,10	13,2	18,44	67	-
FLY DUO KL 2000 A	16.000	4,16	5,46	17,6	24,60	68	-
FLY DUO KL 2500 A	20.000	5,20	6,82	22,0	30,74	69	-
FLY DUO KL 3000 A	24.000	6,24	8,18	26,4	36,88	70	-

### \* UNHEATED

Model	Airflow m³/h	Ventilation power		Ventilation current		Noise Level (5 m) dB(A)	Weight kg
		230V~50Hz kW	230V~60Hz kW	230V~50Hz A	230V~60Hz A		
FLY DUO KXL 1000 A	10.600	2,8	3,68	12,0	16,52	68	-
FLY DUO KXL 1500 A	15.900	4,2	5,52	18,0	24,78	69	-
FLY DUO KXL 2000 A	21.200	5,6	7,36	24,0	33,04	70	-
FLY DUO KXL 2500 A	26.500	7,0	9,20	30,0	41,30	71	-
FLY DUO KXL 3000 A	31.800	8,4	11,04	36,0	49,56	72	-



FLY DUO System With Plenum

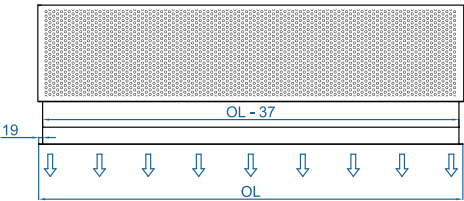
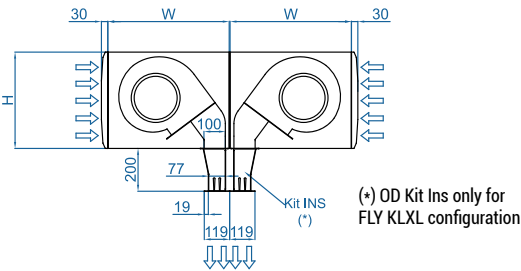


FLY Duo K - Plenum											
L	H	W	P	FP	A	B1	C	D	E	F	OL
1000	260	340	260	4	920	-	257	17	40	305	998
1500				6	1420	710					1498
2000				6	1920	960					1998
2500				8	2420	1210					2498
3000				10	2920	1460					2998

FLY Duo KBB - Plenum											
L	H	W	P	FP	A	B1	C	D	E	F	OL
1000	310	390	310	4	920	-	297	34	40	349	998
1500				6	1420	710					1498
2000				6	1920	960					1998
2500				8	2420	1210					2498
3000				10	2920	1460					2998

FLY Duo KLXL + Kit INS - Plenum													
L	H	W	P	FP	A	B1	B2	B3	C	D	E	F	OL
1000	450	570	450	4	920	-	-	-	490	35	40	475	998
1500				6	1420	710	-	-					1498
2000				6	1920	960	-	-					1998
2500				8	2420	-	806,7	-					2498
3000				10	2920	-	-	730					2998

FLY DUO System Without Plenum



FLY Duo K											
L	H	W	FP	A	B1	C	D	OL			
1000	260	340	4	920	-	257	66	998			
1500			6	1420	710			1498			
2000			6	1920	960			1998			
2500			8	2420	1210			2498			
3000			10	2920	1460			2998			

FLY Duo KBB											
L	H	W	FP	A	B1	C	D	OL			
1000	310	390	4	920	-	297	59	998			
1500			6	1420	710			1498			
2000			6	1920	960			1998			
2500			8	2420	1210			2498			
3000			10	2920	1460			2998			

FLY Duo KLXL + Kit INS - Plenum											
L	H	W	FP	A	B1	B2	B3	C	D	OL	
1000	450	570	4	920	-	-	-	490	35	998	
1500			6	1420	710	-	-			1498	
2000			6	1920	960	-	-			1998	
2500			8	2420	-	806,7	-			2498	
3000			10	2920	-	-	730			2998	