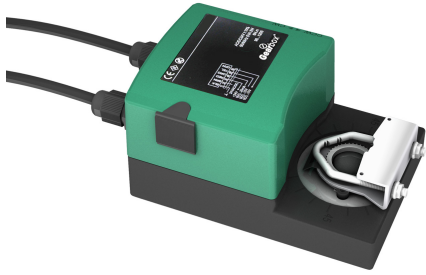




Characteristics



- Directional rotation selector
- Releasing button
- Universal flange for shifts Ø8 a Ø18 mm and square from 6 to 16 mm
- Models of 6 Nm for shutters till 1,2 m² and models of 10 Nm for shutters till 1,8 m² depending on manufacturer

Specifications

Model	Torque (Nm)	Tension (V (50 Hz))	Control	Running Time 90° (s)	Auxiliar Contact	Feedback signal (kOhm)
N 230	6	230AC	T/N	30 -150	-	-
N 230 P	6	230AC	T/N	30 -150	-	10
N 230 S	6	230AC	T/N	30 -150	1x3A	-
N 24	6	24AC/DC	T/N, 3P	30 -150	-	-
N 24 P	6	24AC/DC	T/N, 3P	30 -150	-	10
N 24 R	6	24AC/DC	0,,,10V	30 -150	-	-
N 24 S	6	24AC/DC	T/N, 3P	30 -150	1x3A	-
S 230	10	230AC	T/N	30 -150	-	-
S 230 P1	10	230AC	T/N	30 -150	-	10
S 230 S2	10	230AC	T/N	30 -150	2x3A	-
S 24	10	24AC/DC	T/N, 3P	30 -150	-	-
S 24 P1	10	24AC/DC	T/N, 3P	30 -150	-	10
S 24 R	10	24AC/DC	0,,,10V	30 -150	-	-
S 24 S2	10	24AC/DC	T/N, 3P	30 -150	2x3A	-