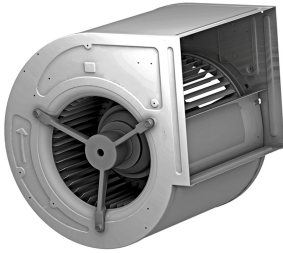




## Characteristics



- External rotor motor protected through thermal contact
- Balanced statically and dynamically according DIN/ISO1940, class Q 2,5
- Low noise level
- Vibrations free
- Motor connections through both sides of the casing
- Variable speed 0-100% through electronic controller or transformer

## Specifications

Model	Tension (V (50 Hz))	Current fans (A)	Power fans (kW)	Speed (rpm)	Air Flow (m <sup>3</sup> /h)	Maximum Pressure (Pa)
DZAD 10/10- 4	3x400V	2,1	1,15	1080	4500	500
DZAD 10/10- 6	3x400V	1,4	0,54	900	4300	250
DZAD 12/12- 6	3x400V	2,7	1,45	810	7000	345
DZAD 15/15- 6	3x400V	6	2,9	835	10000	550
DZAE 10/10- 4	1x230V	4,8	1,1	1050	4200	500
DZAE 10/10- 6	1x230V	2,8	0,6	875	4000	250
DZAE 12/12- 6	1x230V	5,2	1,15	820	5700	340
DZAE 7/7- 4	1x230V	1,4	0,32	1080	1700	280
DZAE 7/7- 6	1x230V	0,75	0,17	760	1450	125
DZAE 7/9- 4	1x230V	2,6	0,57	1240	3000	260
DZAE 7/9- 4K	1x230V	2	0,44	1050	2600	260
DZAE 7/9- 6	1x230V	1,6	0,36	750	1650	140
DZAE 9/9- 4	1x230V	3,9	0,87	950	3600	360
DZAE 9/9- 6	1x230V	1,6	0,36	660	2600	170