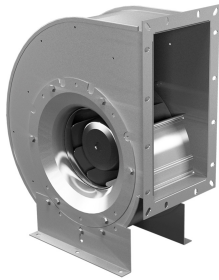




## Characteristics



- Standard serie according to R20 i DIN 323
- External rotor motor protected through thermal contact
- Impellers balanced statically and dinamically according ISO 1940
- Low noise level
- Specially indicated for pollutioned areas ventilation, as the impeller does not need to be cleaned
- Some three phase models are available in EX anti-explosion execution
- 'G' Models with EC motor of low consume

## Specifications

Model	Tension (V (50 Hz))	Current fans (A)	Power fans (kW)	Speed (rpm)	Air Flow (m <sup>3</sup> /h)	Maximum Pressure (Pa)
EHAD 250-2	3x400V	0,95	0,55	2480	2200	820
EHAD 280-2	3x400V	1,9	1	2660	3300	980
EHAD 315-2	3x400V	3,4	1,9	2600	4400	1300
EHAD 315-4	3x400V	0,56	0,28	1330	2600	320
EHAD 355-4	3x400V	0,85	0,41	1370	3500	460
EHAD 400-4	3x400V	1,3	0,62	1280	4800	550
EHAD 450-4	3x400V	2	1,05	1290	6700	700
EHAD 500-4	3x400V	3,85	2,1	1350	10500	890
EHAD 560-4	3x400V	6,6	3,5	1330	13800	1100
EHAE 225-2	1x230V	1,4	0,32	2580	1400	640
EHAE 250-2	1x230V	2,9	0,64	2660	2100	830
EHAE 280-2	1x230V	4,65	1,05	2620	3100	960
EHAE 315-4	1x230V	1,3	0,29	1270	2500	330
EHAE 355-4	1x230V	1,8	0,39	1320	3450	450
EHAE 400-4	1x230V	3,2	0,68	1280	4700	530
EHAE 450-4	1x230V	5,1	1,1	1275	6700	680
EHAG 355.5FA	3x400V	1,9	1,07	1900	4850	830
EHAG 400.5HF	3x400V	-	1,7	1900	7000	985
EHAG 450.6FF	3x400V	4,25	2,7	1900	9500	1350
EHAG 500.6IF	3x400V	4,6	2,9	1600	11000	1085
EHAG 560.6IF	3x400V	4,4	2,75	1300	13000	975