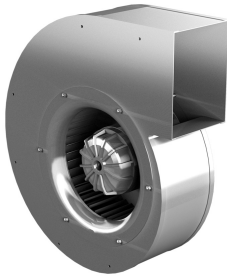




## Characteristics



- The speed is automatically adaptable to pressure variations of the system (gliding characteristic)
- External rotor motor protected through thermal contact
- Variable speed 0-100% through electronic controller or transformer
- Stainless steel impeller balanced statically and dynamically according ISO 1940
- Extremely low noise level
- Specially indicated for bag filters equipments and laminar flow installations

## Specifications

Model	Tension (V (50 Hz))	Current fans (A)	Power fans (kW)	Speed (rpm)	Air Flow (m <sup>3</sup> /h)	Maximum Pressure (Pa)
ERAD 314-4	3x400V	2,15	1,2	1240	2800	550
ERAD 356-4	3x400V	4,5	2,45	1270	4000	830
ERAD 399-4	3x400V	5,1	2,75	1390	3500	1050
ERAE 279-4	1x230V	3,85	0,81	1225	2200	540
ERAE 281-4	1x230V	4,25	0,9	1200	2300	530
ERAE 314-4	1x230V	4,2	0,93	1025	2600	550
ERAE 356-4	1x230V	7	1,56	1135	2900	780