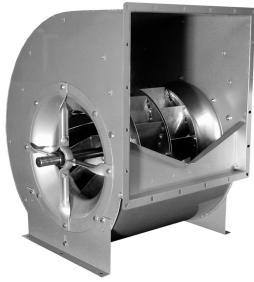


Characteristics



- Airflow volume till 100.000 m³/h
- Galvanized steel casing of high stability
- Impellers balanced statically and dinamically according DIN/ISO1940, class Q 2,5
- Long life over-sized ball bearings
- Temperatures from -20°C to +80°C
- HRZS aluminium impeller. HRZP polyamide impeller (only for model 450)
- Motor and transmission not included (to be calculated according working point)
- Available turbine diameters: 200, 225, 250, 280, 315, 355, 400, 450, 500, 560, 630, 710, 800, 900 and 1000 (mm)
- Available configurations: HRZ 01, HRZ 03 i HRZ 05/07
- Available orientations: RD 0, RD 270 i LG 90