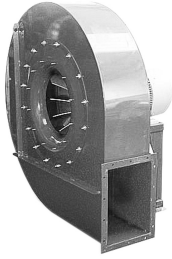




Characteristics



- Directly connected motor
- Casing made of steel sheet, finished epoxy
- Forward curved impellers, balanced statically and dynamically
- Special versions for high temperatures optional
- EX anti-explosion execution optional

Specifications

Model	Tension (V (50 Hz))	Current fans (A)	Power fans (kW)	Speed (rpm)	Air Flow (m³/h)	Maximum Pressure (Pa)
MAP 160	3x400V	0,23	0,09	2800	300	580
MAP 160M	1x230V	0,39	0,09	2800	300	580
MAP 200	3x400V	0,42	0,18	2800	400	870
MAP 200M	1x230V	0,78	0,18	2800	400	870
MAP 250	3x400V	1,2	0,37	2800	500	1200
MAP 250M	1x230V	1,61	0,37	2800	500	1200
MAP 280	3x400V	1,42	0,55	2800	600	1600
MAP 280M	1x230V	2,39	0,55	2800	600	1600
MAP 300	3x400V	2,14	0,75	2800	700	2000
MAP 300M	1x230V	3,26	0,75	2800	700	2000
MAP 350	3x400V	3,73	1,5	2800	1000	2650
MAP 350M	1x230V	6,52	1,5	2800	1000	2650
MAP 400	3x400V	4,78	2,2	2800	1200	3350