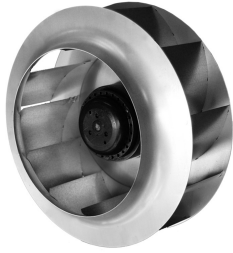


## Characteristics



- External rotor motor protected through thermal contact
- Impellers balanced statically and dynamically according to DIN1940
- Low noise level
- Inlet ear to optimize the entrance of air, optional
- 24VDC motors also available 48VDC. Consult

## Specifications

Model	Tension (V (50 Hz))	Current fans (A)	Power (W)	Speed (rpm)	Air Flow (m <sup>3</sup> /h)	Maximum Pressure (Pa)
2RRE15 192/40R	1x230V	0,29	62	2500	590	350
2RRE25 220/45R	1x230V	0,39	89	2525	935	450
2RRE25 225/40R	1x230V	0,5	97	2630	1050	460
2RRE35 225/63R	1x230V	0,69	158	2535	1280	480
2RRE45 250/56R	1x230V	0,83	190	2700	1540	580
4RRE15 192/40R	1x230V	0,15	32	1405	315	100
4RRE15 225/40R	1x230V	0,17	38	1390	515	110
4RRE25 225/63R	1x230V	0,23	50	1400	740	130
4RRE25 250/56R	1x230V	0,21	47	1395	870	140
4RRE45 315/101R	1x230V	0,58	119	1375	1845	265
4RRE45 315/71R	1x230V	0,53	107	1415	1450	250
RRE24 180/35R	24VDC	2,13	51	2995	460	450
RRE24 192/40R	24VDC	3,3	79	3075	530	650
RRE24 220/45R	24VDC	4,18	100	2740	960	600
RRE24 225/63R	24VDC	4,56	109	2255	1170	550