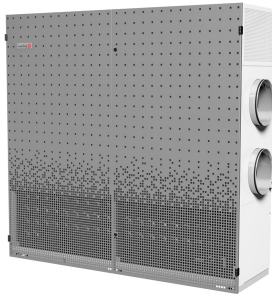




Characteristics

The decentralised energy recovery unit series SupraBox DELUXE is ideal for use in classrooms and seminar rooms as well as offices and common rooms. Through the integrated source air outlet and the direct removal of the exhaust air via the unit, no additional ventilation pipes are needed in the direction of the room. A CO₂ need-based control ensures maximum comfort and creates optimal indoor air quality. Two units are available with different ventilation system capacities depending on room occupancy and number of persons. Both units develop a maximum sound pressure level of 35 dB(A) (at 1m distance), thus ensuring trouble-free use of the space.



- Source air systems for maximum ventilation efficiency at minimum noise levels.
- Suitable for decentralised use in the room and rely on draught-free and uniform air distribution through a source air outlet integrated into the unit.
- Demand-controlled regulation using CO₂ sensor, ensuring continuous compliance with the 1000 ppm CO₂ concentration in the room.
- Integrated Bypass (allows freecooling in summer)
- Easy-to-install in the room.
- Highest energy efficiency due to EC motor fans.
- Designed according to current, valid safety and hygiene standards and guidelines.

Specifications

Model	Tension (V (50 Hz))	Current fans (A)	Power fans (kW)	Speed (rpm)	Air Flow (m ³ /h)	Maximum Pressure (Pa)	Dimensions (mm)	Filter F7 (mm)	Filter M5 (mm)	Air connection (mm)	Weight (kg)
DELUXE 500 V	1x230V	1,5	2x0,13	2200	500	50	997x522x2,078	308x482x48	260x443x48	Ø250	206
DELUXE 750 H	1x230V	6,5	2x0,74	1750	750	50	1950x570x1900	468x428x96	381x464x48	330x480	335