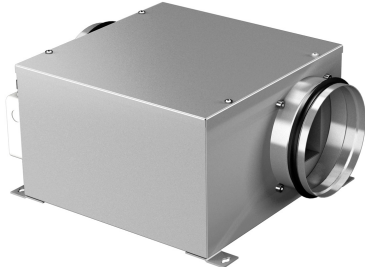




## Characteristics

Low-profile ventilation box, for installation in false ceilings. Reduced noise thanks to the acoustic insulation of the walls. ErP-compliant thanks to the energy-saving EC fan. Designed for standard ductwork with circular connections. Easy maintenance due to the large service door. Low-profile ventilation box, for installation in false ceilings. Reduced noise thanks to the acoustic insulation of the walls. ErP-compliant thanks to the energy-saving EC fan. Designed for standard ductwork with circular connections. Easy maintenance due to the large service door.



- Low profiled ventilation unit
- External rotor motor protected through thermal contact
- 0-100% variable speed
- Connection box IP44 incorporated
- Wide service door Circular connexions to standard ducts
- "U" Models with single inlet forward curved impeller
- "EC" Models with low consume EC motor

## Specifications

Model	Tension (V (50 Hz))	Current fans (A)	Power (W)	Speed (rpm)	Air Flow (m <sup>3</sup> /h)	Maximum Pressure (Pa)
Z 100 U	1x230V	0,32	74	2340	285	310
Z 125 U	1x230V	0,48	110	2220	375	330
Z 150 U	1x230V	0,9	210	2450	590	525
Z 150 U EC	1x230V	0,65	98	1660	550	800
Z 200 U	1x230V	0,68	150	1210	730	260